

CERTIFICATE OF LOCATION OF GOVERNMENT CORNER

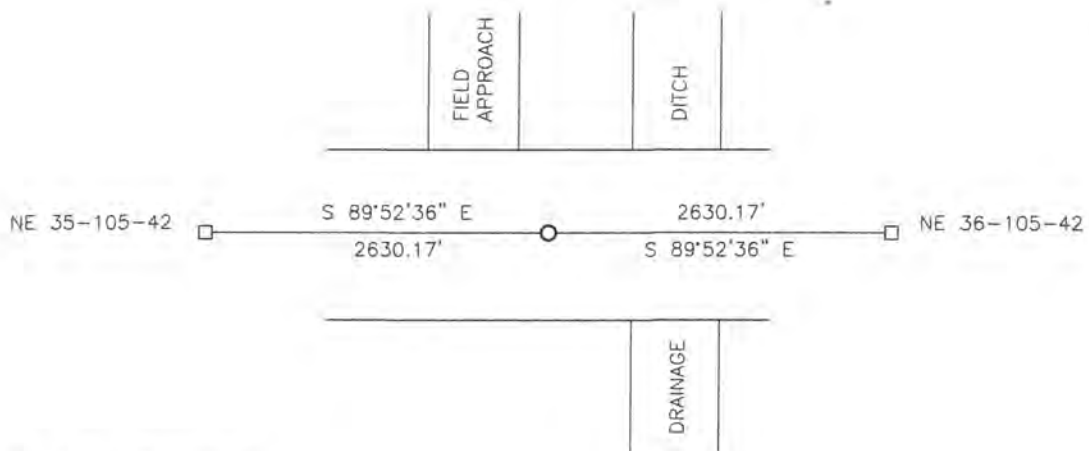
NORTH QUARTER Corner of Section 36, Township 105, Range 42, 5TH P.M.

STATE OF MINNESOTA, County of MURRAY

At the corner location shown on the sketch:

- On _____ found a _____
- left monument as found, lowered monument, removed monument (explain)
- On 08-06-2018 placed a 5/8" IRON WITH SEAL #43844.

SKETCH OF REFERENCE TIES



Minnesota State Plane Coordinate
 System Murray County Datum
 NAD83 (1996)
 N: 105395.197
 E: 482299.861

Statement of evidence relative to this corner location is on back of page.

I hereby certify that this document and the data contained herein was prepared by me or under my direct supervision.

Daniel L. Bueltel
 License No. 43844

8/28/18
 DATE

Statement of Evidence

In 1861, Wellman and Smoot did the original subdivision of the township.

On November 6, 1912, J. W. Woolsteincraft set a stone with broken clevis below it at the corner.

On August 6, 2018, Bueltel-Moseng Land Surveying dug with a backhoe and found nothing. We set a $\frac{5}{8}$ " iron with seal #43844 midway and on line between section corners. It is $2' \pm$ south of the center of the road and within $0.2' \pm$ of the recorded distance from the northeast corner of Section 36-105-42 shown on the 1912 survey.